



Magswitch Technology, Inc.  
 8774 Yates Dr. Suite 140  
 Westminster, CO 80031  
 Magswitch.com.au  
 303-468-0662

# Magswitch BoomerAngle 150

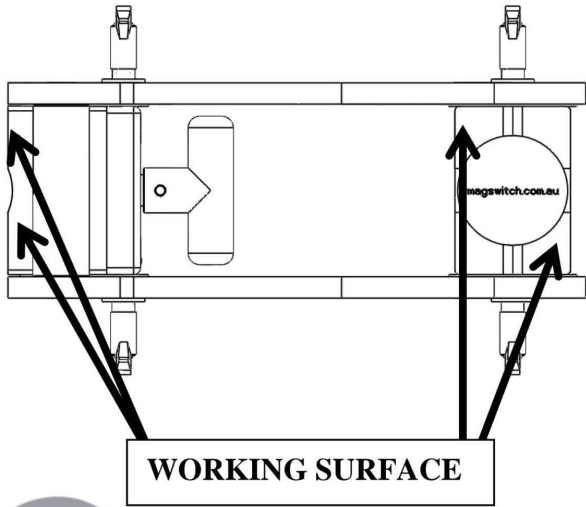
## P/N: 8100091

The Magswitch BoomerAngles offer virtually unlimited angles. With a rotating MagSquare at the end of each axis. Magswitch BoomerAngles offers not only a fixed 90 degree angle on the inside and outside, but are adjustable to any angle in between. Featuring the benefits of Magswitch including incredible power and precision control, Magswitch BoomerAngles are easy to use and can be used with larger and heavier steel.



**WARNING!**  
**Do Not Operate Unless In**  
**Contact With Ferrous Target**

SPECIFICATIONS	
<b>P/N: 8100091 - MAGSWITCH BoomerAngle 150</b>	
Max Breakaway*	150 lbs/68 kg
Full Saturation Thickness	0.25"/ 6 mm
Max Safe Shear*	14 lbs/6 kg
Net Weight	2.9 lbs/1.3 kg
Overall Height	68 mm
Magnetic Pole Footprint	40mm x 40mm



Sales & Service by :



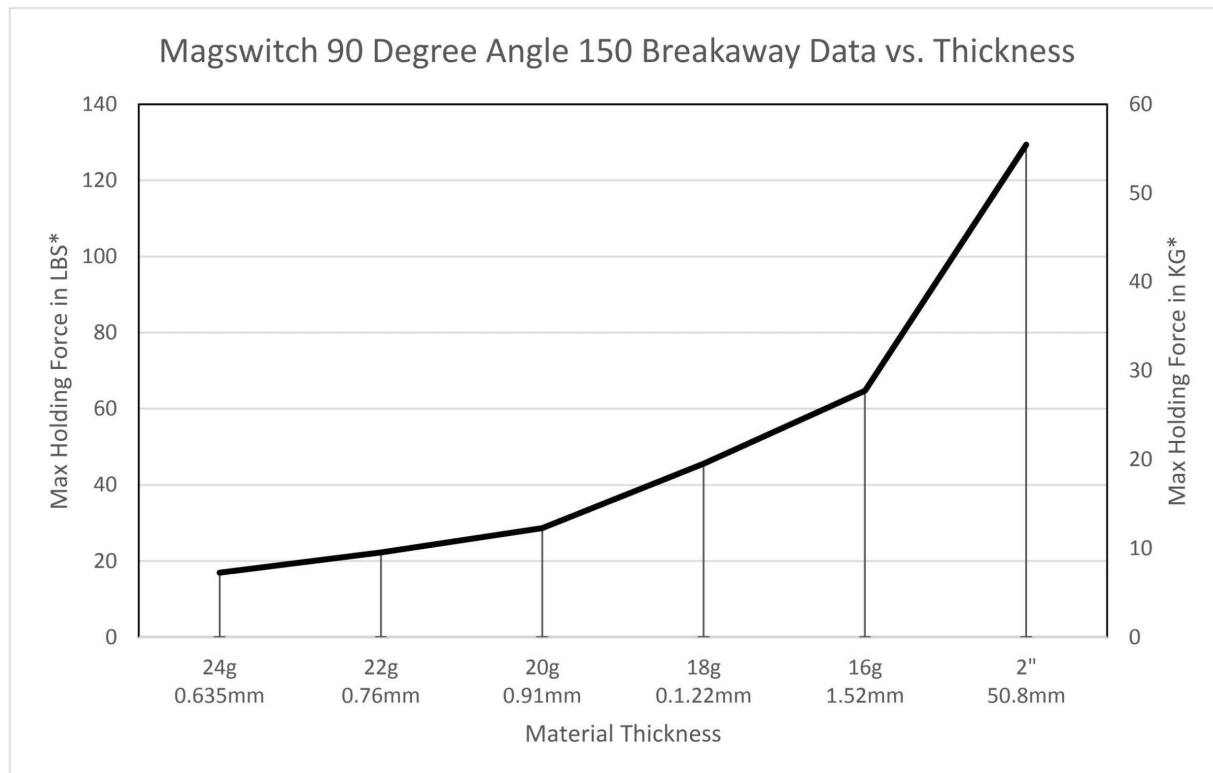
**PRECICUT TECHNOLOGIES**

Address : S. No. 44/6/1, Pimpale Gurav, New Sangavi, Pune – 411061  
 Email: [fulmalavinash@gmail.com](mailto:fulmalavinash@gmail.com) Mob : 9823048288

\* Max Breakaway determined in laboratory environment on 2" thick SAE1018 Steel with surface roughness 63 micro inches. Many factors contribute to the actual breakaway force in each application. Always test the magswitch in each application before deployment. Refer to the magswitch information booklet for more information.



Part Number 110692  
 Revision Date: June 26, 2012



**Sales & Service by :**



**PRECICUT TECHNOLOGIES**

Address : S. No. 44/6/1, Pimpale Gurav, New Sangavi, Pune – 411061  
 Email: [fulmaliavinash@gmail.com](mailto:fulmaliavinash@gmail.com) Mob : 9823048288



Part Number 110692  
 Revision Date: June 26, 2012

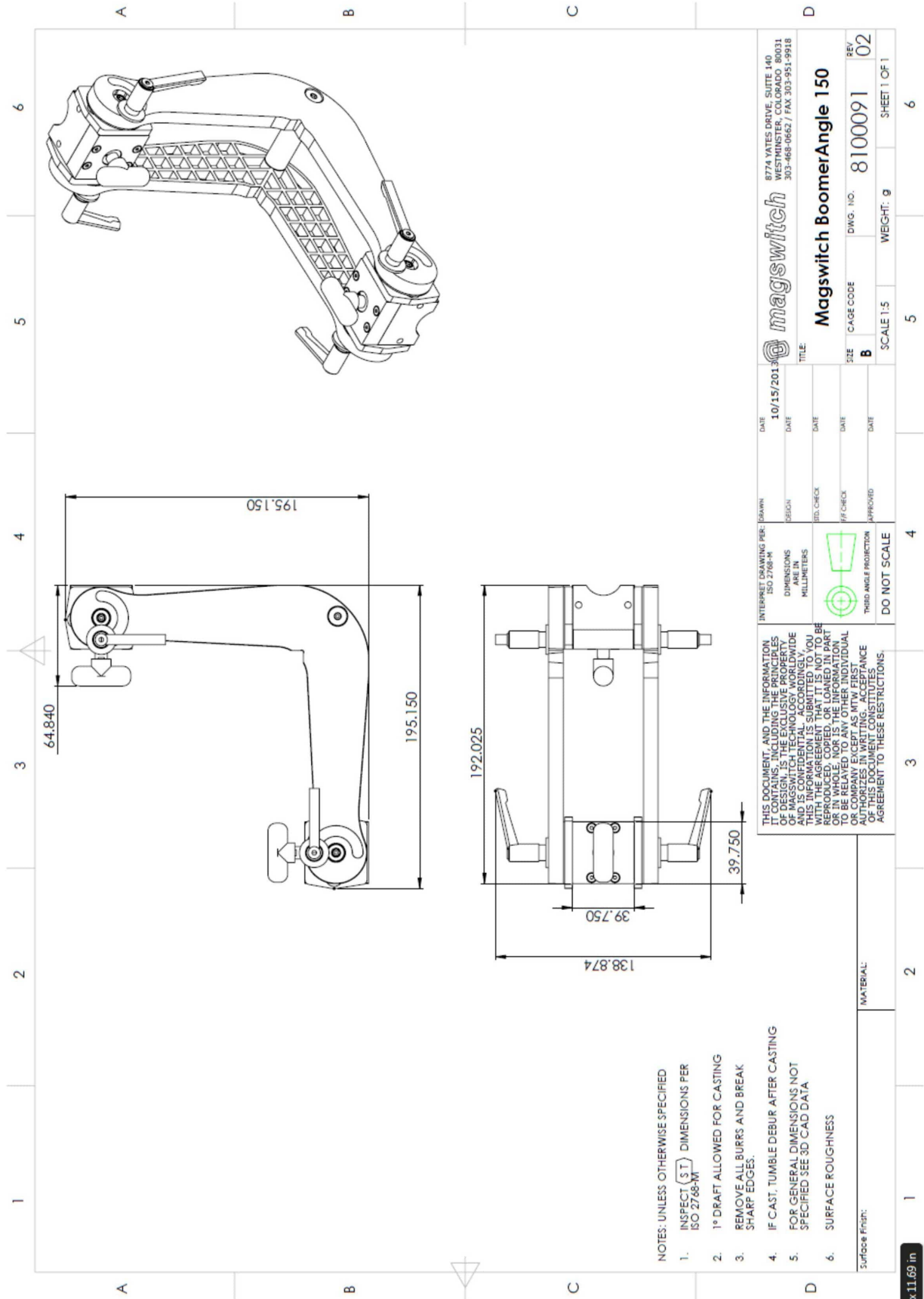
\* Max Breakaway determined in laboratory environment on 2" thick SAE1018 Steel with surface roughness 63 micro inches. Many factors contribute to the actual breakaway force in each application. Always test the magswitch in each application before deployment. Refer to the magswitch information booklet for more information.



Part Number 110692  
Revision Date: June 26, 2012



PRECICUT TECHNOLOGIES



x11.69 in