



Magswitch Technology, Inc.
 8774 Yates Dr. Suite 140
 Westminster, CO 80031
 Magswitch.com.au
 303-468-0662

Magswitch BoomerAngle 400

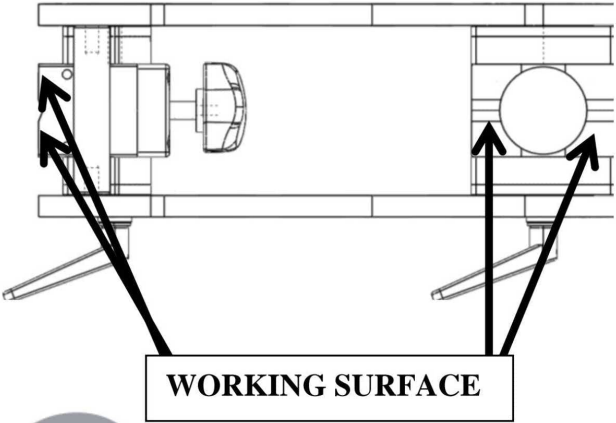
P/N: 8100453

The Magswitch BoomerAngles offer virtually unlimited angles. With a rotating MagSquare at the end of each axis. Magswitch BoomerAngles offers not only a fixed 90 degree angle on the inside and outside, but are adjustable to any angle in between. Featuring the benefits of Magswitch including incredible power and precision control, Magswitch BoomerAngles are easy to use and can be used with larger and heavier steel.

WARNING!
Do Not Operate Unless In
Contact With Ferrous Target

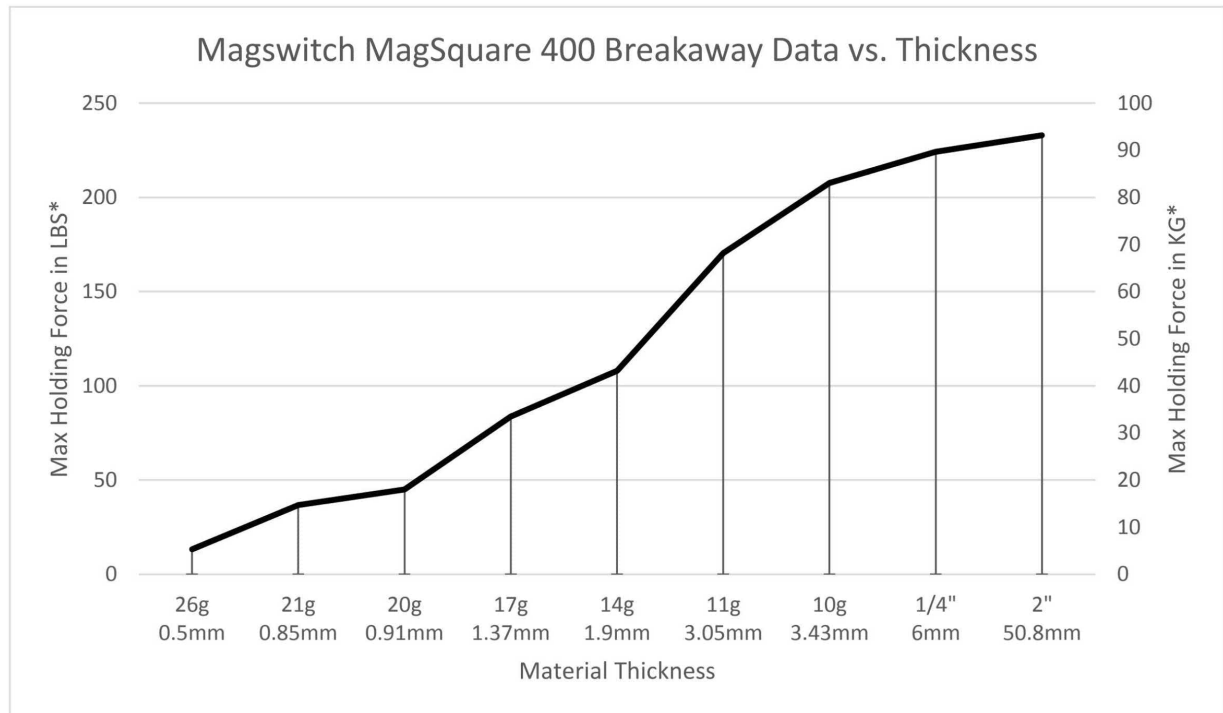


SPECIFICATIONS	
P/N: 8100453 - MAGSWITCH BoomerAngle 400	
Max Breakaway*	400 lbs/181 kg
Full Saturation Thickness	0.1345 in/3.43mm
2:1 Shear Working Load*	20 lbs/9 kg
Net Weight	6.6 lbs/3.0 kg
Overall Height	181 mm
Magnetic Pole Footprint	64mm x 41.26mm



Part Number 110692
 Revision Date: June 26, 2012

* Max Breakaway determined in laboratory environment on 2" thick SAE1018 Steel with surface roughness 63 micro inches. Many factors contribute to the actual breakaway force in each application. Always test the magswitch in each application before deployment. Refer to the magswitch information booklet for more information.



Sales & Service by :



PRECICUT TECHNOLOGIES

Address : S. No. 44/6/1, Pimpale Gurav, New Sangavi, Pune – 411061
 Email : fulmaliavinash@gmail.com Mob : 9823048288



Part Number 110692
 Revision Date: June 26, 2012

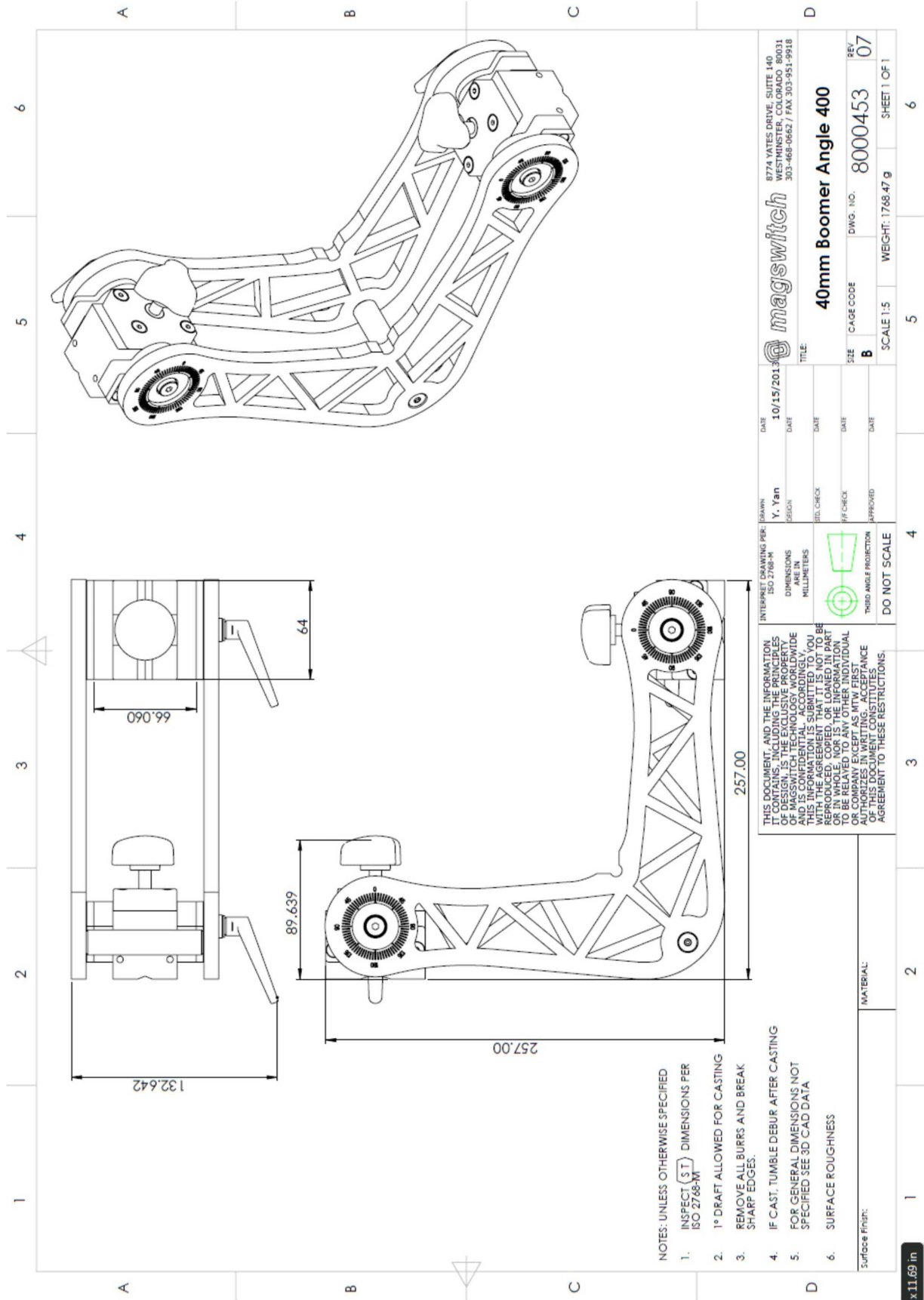
* Max Breakaway determined in laboratory environment on 2" thick SAE1018 Steel with surface roughness 63 micro inches. Many factors contribute to the actual breakaway force in each application. Always test the magswitch in each application before deployment. Refer to the magswitch information booklet for more information.



Part Number 110692
Revision Date: June 26, 2012



PRECICUT TECHNOLOGIES



x11.69 in