



Magswitch 600 Amp Finned Magnetic Ground Clamp

P/N: 8100747

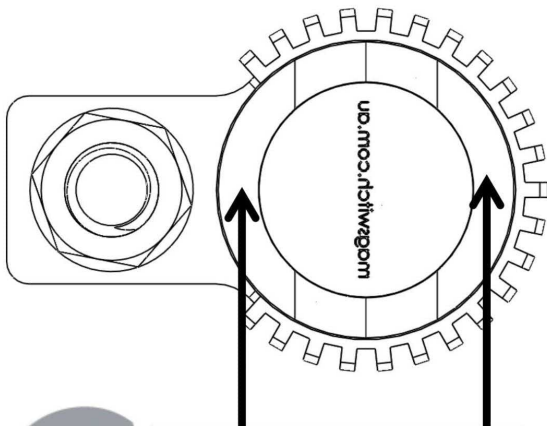
The Magswitch Finned Magnetic Ground Clamps let welders quickly set up, weld and move on to the next job. Simply place it on a clean work surface, turn it on and start welding. Instant ground on a flat surface or a pipe. The finned design lowers the temperature of the unit by almost 27%.



WARNING!
Do Not Operate Unless In
Contact With Ferrous Target

SPECIFICATIONS

P/N: 8100747 - MAGSWITCH 600 Amp Finned Magnetic Ground Clamp	
Magnet Strength	200 lbs/ 89 kg
Net Weight	1.8 lbs/ 0.8 kg
Overall Height	4.0 in/ (103.0 mm)
Magnetic Pole Footprint	69 mm diameter



WORKING SURFACE

Sales & Service by :



PRECICUT TECHNOLOGIES

Address : S. No. 44/6/1, Pimpale Gurav, New Sangavi, Pune – 411061
Email: fulmaliavinash@gmail.com Mob : 9823048288



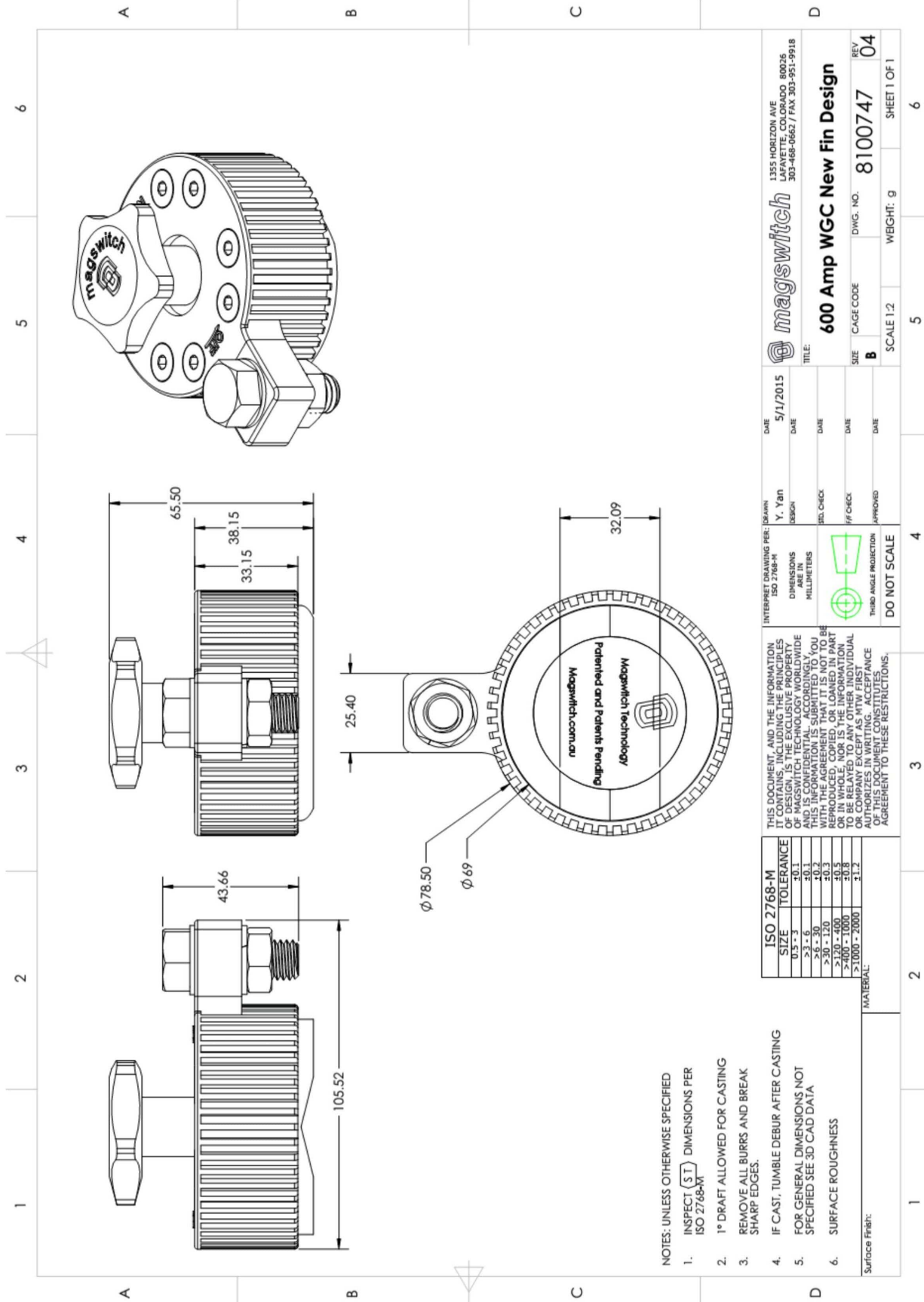
Revision Date: May 1, 2015



Part Number 1101143
Revision Date: May 1, 2015



PRECIT TECHNOLOGIES



- NOTES: UNLESS OTHERWISE SPECIFIED
1. INSPECT (S T) DIMENSIONS PER ISO 2768-M
 2. 1° DRAFT ALLOWED FOR CASTING
 3. REMOVE ALL BURRS AND BREAK SHARP EDGES.
 4. IF CAST, TUMBLE DEBUR AFTER CASTING
 5. FOR GENERAL DIMENSIONS NOT SPECIFIED SEE 3D CAD DATA
 6. SURFACE ROUGHNESS

ISO 2768-M	SIZE	TOLERANCE
	0.3 - 3	+0.1
	>3 - 6	+0.2
	>6 - 30	+0.3
	>30 - 120	+0.5
	>120 - 400	+0.7
	>400 - 1000	+1.0
	>1000 - 2000	+1.2

THIS DOCUMENT, AND THE INFORMATION IT CONTAINS, INCLUDING THE PRINCIPLES OF DESIGN, IS THE EXCLUSIVE PROPERTY OF PRECIT TECHNOLOGIES. IT IS CONFIDENTIAL, ACCORDINGLY, THIS INFORMATION IS SUBMITTED TO YOU ON A NON-REPRODUCTION BASIS. IT IS NOT TO BE REPRODUCED, COPIED, OR LOANED IN PART OR IN WHOLE, NOR IS THE INFORMATION TO BE RELAYED TO ANY OTHER INDIVIDUAL OR ENTITY WITHOUT THE WRITTEN AUTHORIZATION OF PRECIT TECHNOLOGIES. THIS DOCUMENT CONSTITUTES AN AGREEMENT TO THESE RESTRICTIONS.

INTERPRET DRAWING PER: ISO 2768-M
DIMENSIONS ARE IN MILLIMETERS
THIRD ANGLE PROJECTION
DO NOT SCALE

DATE: 5/1/2015
DRAWN BY: Y. Yan
DESIGNER: [blank]
DATE: [blank]
DATE: [blank]
DATE: [blank]
DATE: [blank]

magswitch
1355 HORIZON AVE
LAFAYETTE, COLORADO 80026
303-468-0662 / FAX 303-951-9918
TITLE: 600 Amp WGC New Fin Design
REV: 04
CAGE CODE: B
DWG. NO.: 8100747
SCALE: 1:2
WEIGHT: g
SHEET 1 OF 1