



Magswitch Technology, Inc.
 1355 Horizon Ave.
 Lafayette, CO 80026
 Magswitch.com.au
 303-468-0662

Magswitch Mini Multi Angle w/ 300 Amp Ground

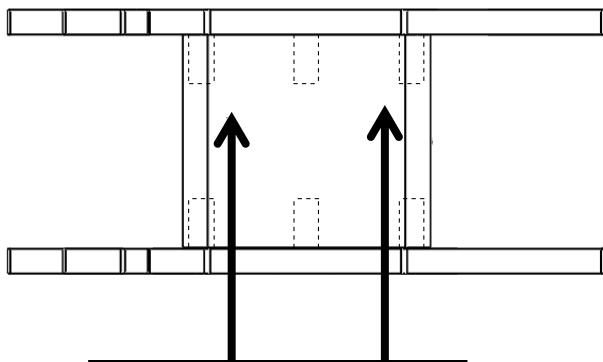
P/N: 8100351

The Magswitch line of Mini Multi Angle workholding magnets offer you more angles in one product than any other magnetic angles. If you're tired of Mini angle magnets that claim they shut off, but really don't, then you'll love Magswitch. Magswitch Mini angles are hassle free. They stay clean for years of use. Once you use Magswitch Mini Angles, you will never settle for anything less!



WARNING!
 Do Not Operate Unless In
 Contact With Ferrous Target

SPECIFICATIONS	
P/N: 8100351 - MAGSWITCH Mini Multi Angle w/ 300 Amp Ground	
Max Breakaway*	150 lbs/67 kg
Full Saturation Thickness	11 g / 3.05 mm
2:1 Shear Working Load*	6 lbs / 2.7 kg
Net Weight	0.9 lbs/0.4 kg
Overall Height	87 mm
Magnetic Pole Footprint	90.5 mm x 44 mm



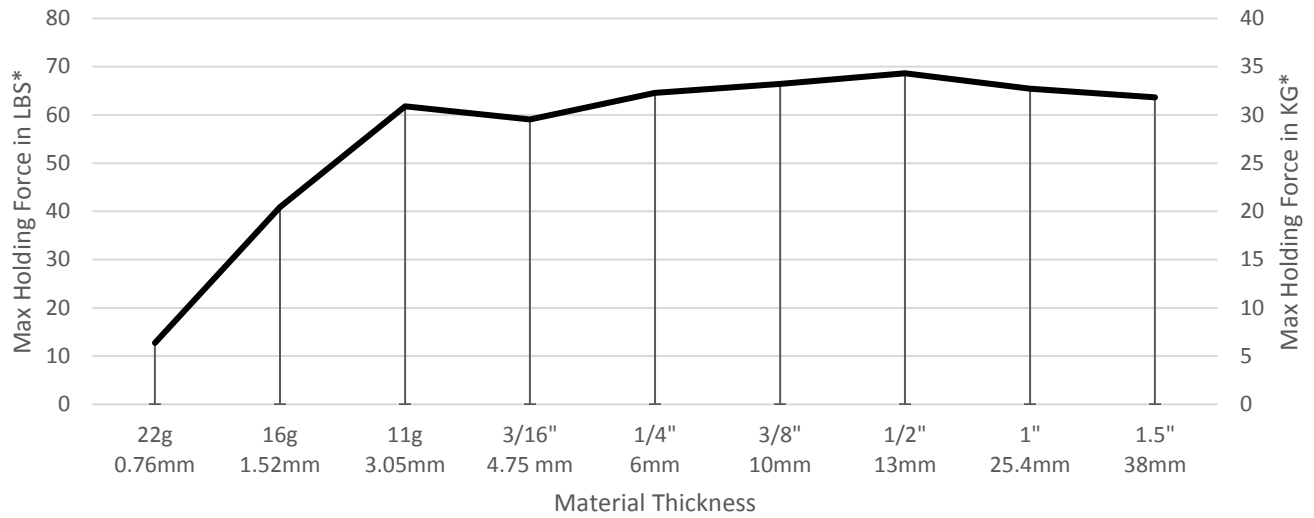
WORKING SURFACE



Part Number 110931
 Revision Date: April 26, 2018

* Max Breakaway determined in laboratory environment on 2" thick SAE1018 Steel with surface roughness 63 micro inches. Many factors contribute to the actual breakaway force in each application. Always test the magswitch in each application before deployment. Refer to the magswitch information booklet for more information.

Magswitch Mini Multi Angle w/ 300 Amp Ground Clamp Breakaway Data vs. Thickness

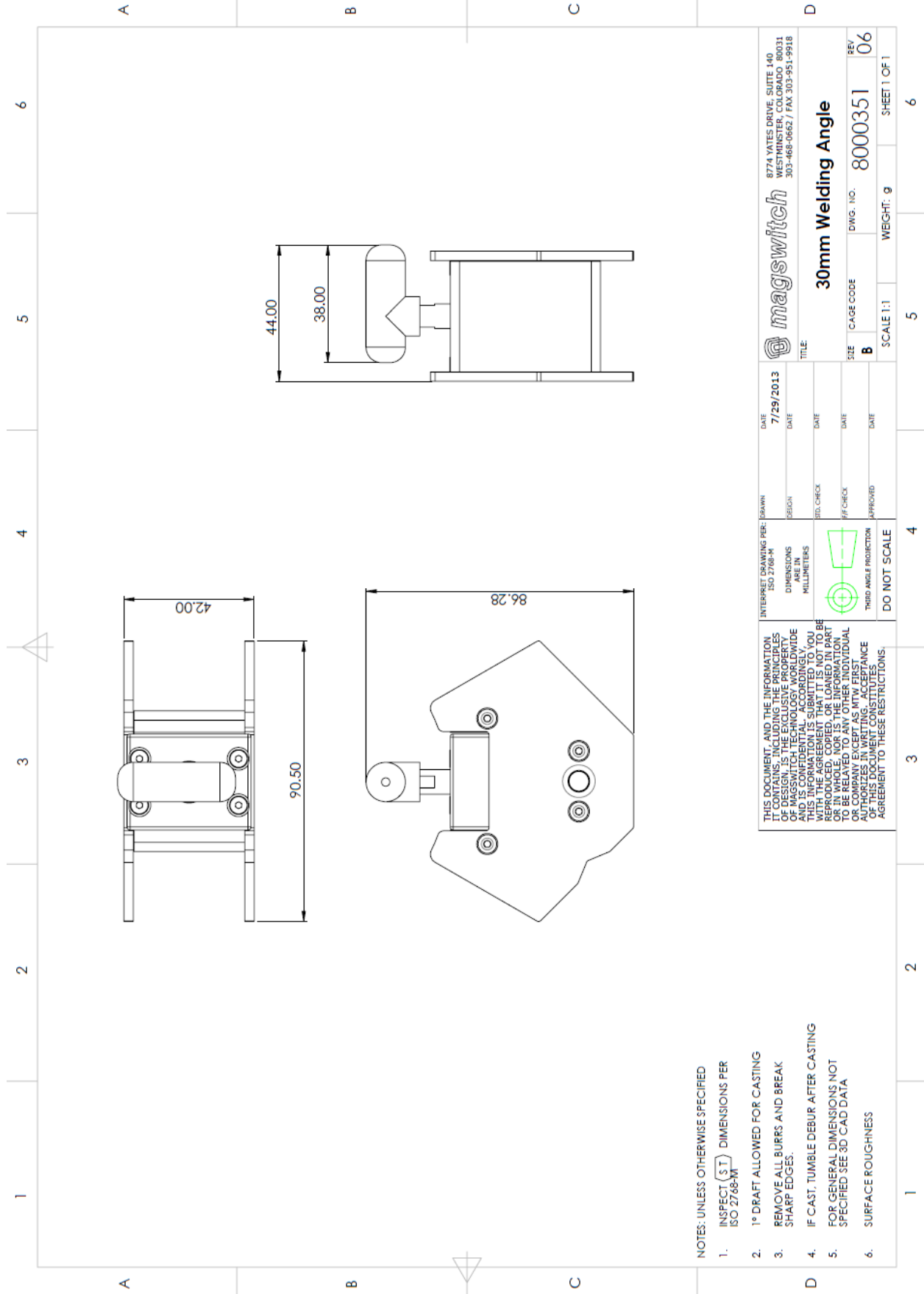


Part Number 110931
Revision Date: April 26, 2018

* Max Breakaway determined in laboratory environment on 2" thick SAE1018 Steel with surface roughness 63 micro inches. Many factors contribute to the actual breakaway force in each application. Always test the magswitch in each application before deployment. Refer to the magswitch information booklet for more information.



Part Number 110931
 Revision Date: April 26, 2018



NOTES: UNLESS OTHERWISE SPECIFIED

1. INSPECT (S T) DIMENSIONS PER ISO 2768-MT
2. 1° DRAFT ALLOWED FOR CASTING
3. REMOVE ALL BURRS AND BREAK SHARP EDGES.
4. IF CAST, TUMBLE DEBUR AFTER CASTING
5. FOR GENERAL DIMENSIONS NOT SPECIFIED SEE 3D CAD DATA
6. SURFACE ROUGHNESS

INTERPRET DRAWING PER: ISO 2768-MT DIMENSIONS IN MILLIMETERS		DATE: 7/29/2013
THIS DOCUMENT, AND THE INFORMATION IT CONTAINS, INCLUDING THE PRINCIPLES OF MAGSWITCH TECHNOLOGY, WORLDWIDE AND IS CONFIDENTIAL. ACCORDINGLY, THIS INFORMATION IS SUBMITTED TO YOU UNDER A LIMITED LICENSE. IT IS NOT TO BE REPRODUCED, COPIED, OR LOANED IN PART OR IN WHOLE, NOR IS THE INFORMATION TO BE RELAYED TO ANY OTHER INDIVIDUAL WITHOUT THE WRITTEN PERMISSION. YOUR AUTHORIZES IN WRITING. ACCEPTANCE OF THIS DOCUMENT CONSTITUTES AGREEMENT TO THESE RESTRICTIONS.		DATE: _____ DATE: _____ DATE: _____ DATE: _____ DATE: _____
DESIGN: _____ DIMENSIONS: _____ MILLIMETERS	3D CHECK: _____ 2D CHECK: _____ APPROVED: _____	TITLE: 30mm Welding Angle SIZE: B CAGE CODE: _____ DWG. NO.: 8000351 REV: 06 SCALE: 1:1 WEIGHT: g SHEET 1 OF 1